



New Forest Log Cabins Ltd

**Sussex Element (Timber Frame)
Transportable Mobile Home**



www.newforestlogcabins.co.uk

Tel: 01258 840316

sales@newforestlogcabins.co.uk



New Forest Log Cabins Ltd

**Sussex Element (Timber Frame)
Transportable Mobile Home**



www.newforestlogcabins.co.uk

Tel: 01258 840316

sales@newforestlogcabins.co.uk



New Forest Log Cabins Ltd

**Sussex Element (Timber Frame)
Transportable Mobile Home**



www.newforestlogcabins.co.uk

Tel: 01258 840316

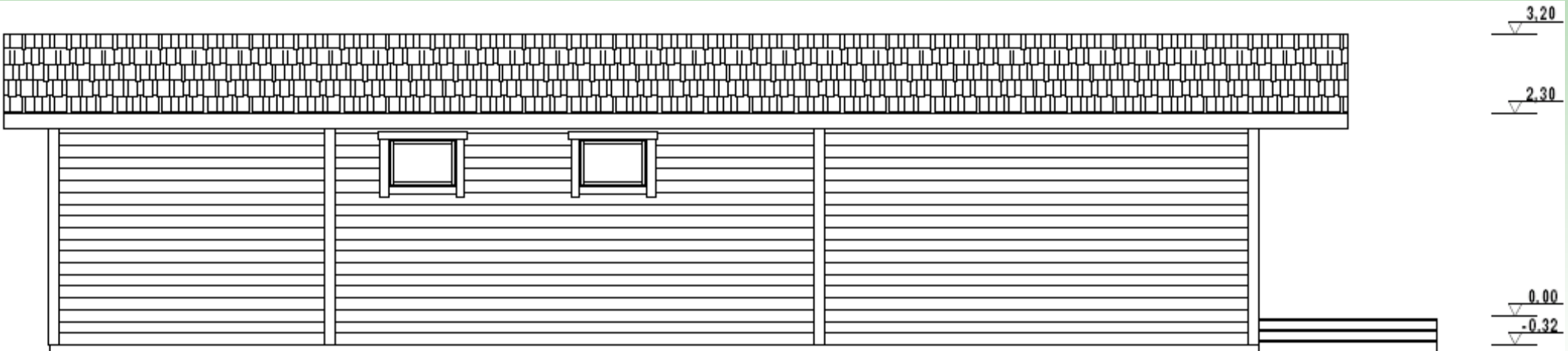
sales@newforestlogcabins.co.uk



New Forest Log Cabins Ltd



Sussex Element (Timber Frame) Transportable Mobile Home

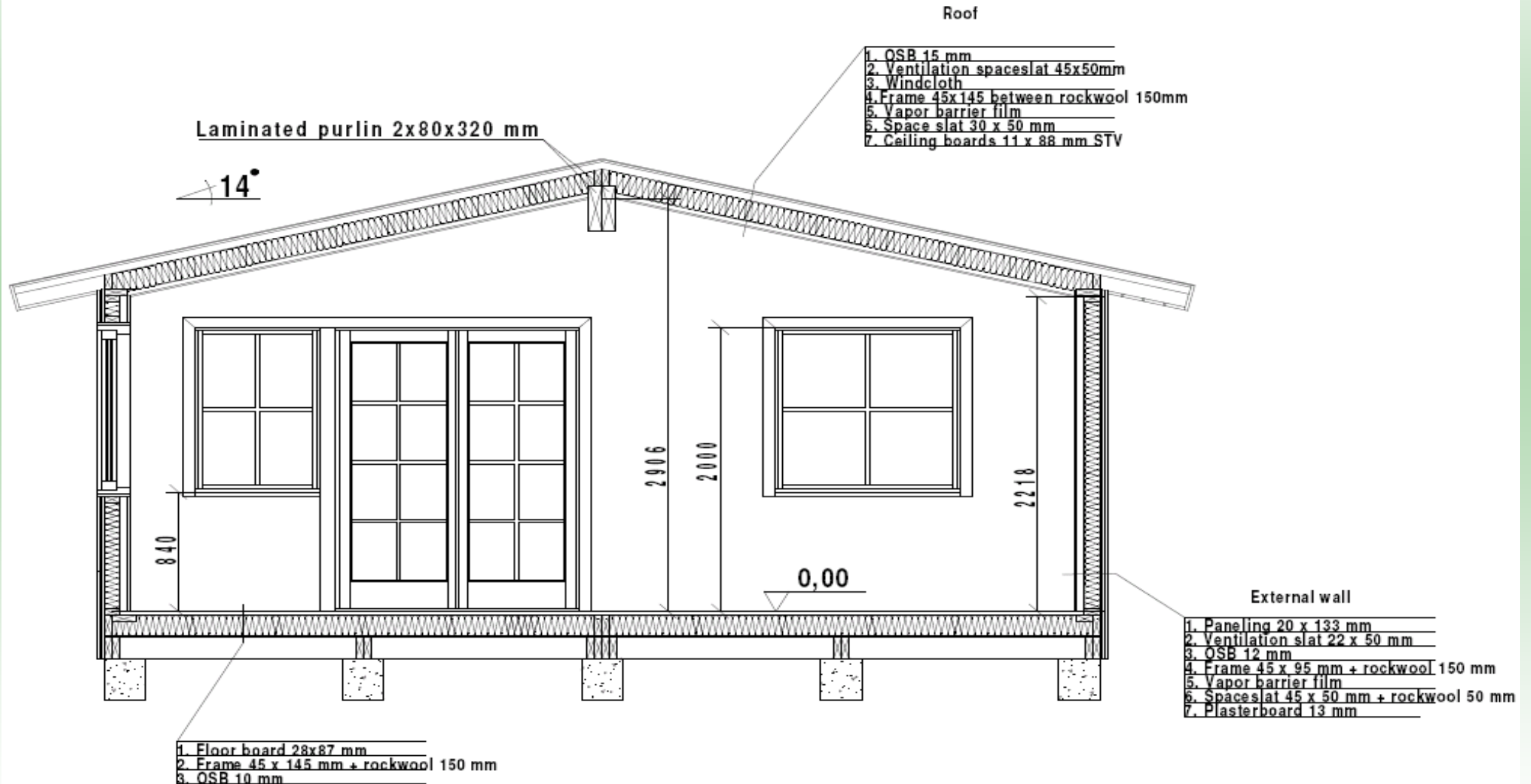




New Forest Log Cabins Ltd



Sussex Element (Timber Frame) Transportable Mobile Home

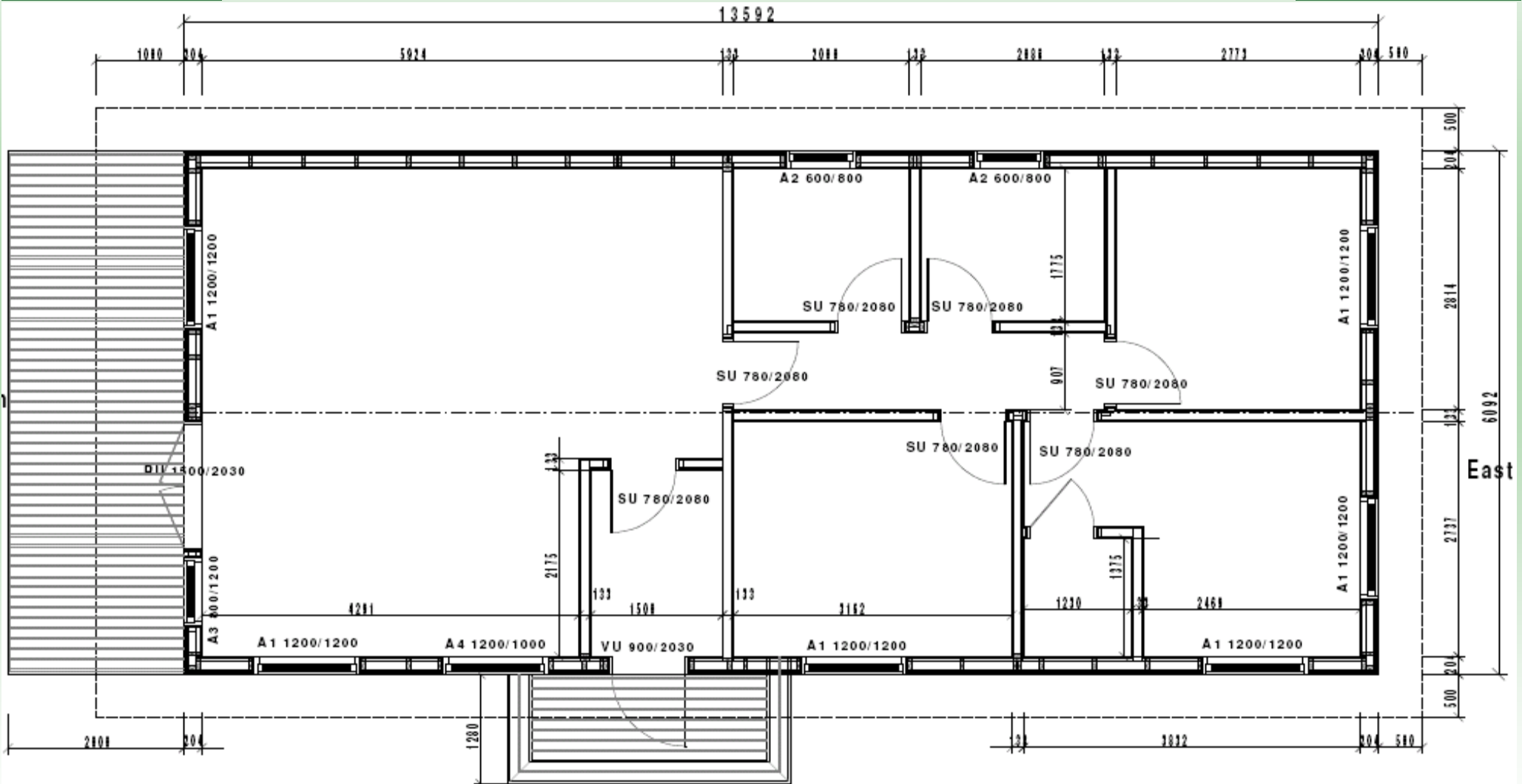




New Forest Log Cabins Ltd



Sussex Element (Timber Frame) Transportable Mobile Home

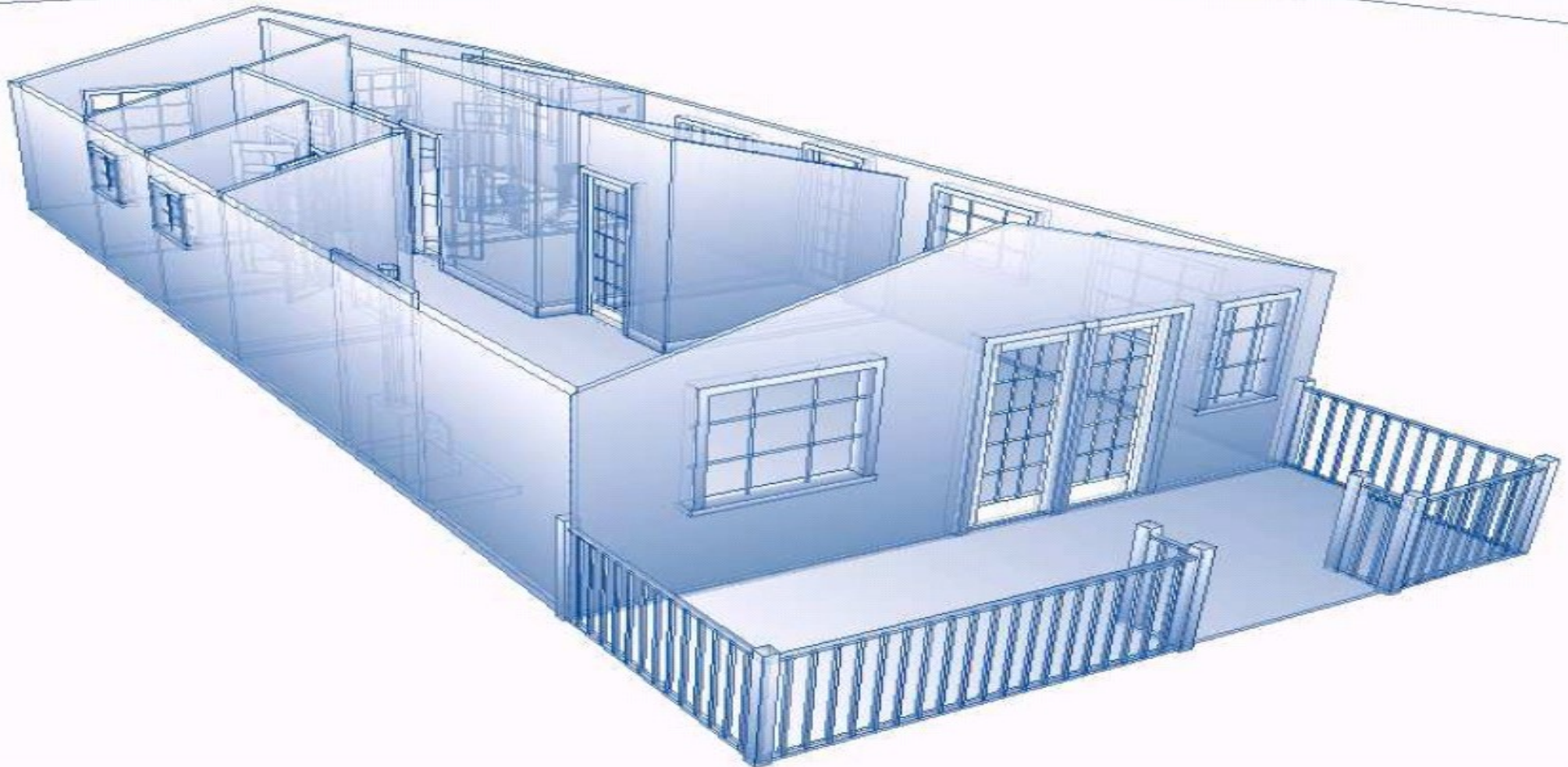




New Forest Log Cabins Ltd



Sussex Element (Timber Frame) Transportable Mobile Home





New Forest Log Cabins Ltd



Sussex Element (Timber Frame) Transportable Mobile Home

Insulation

All floor, wall and roof panels are insulated with 100mm Rockwool insulation as standard. Kingspan or other insulation materials are available on request.



Complete Wall Sections

A typical cavity wall construction, built to European Standards for winter temperatures -20°C :

It comprises of :

- T&G cladding 20x180 mm
- 14x50 mm ventilation battens
- OSB 12 mm, timber frame 45x95 mm
- Insulation 100 mm
- Option of internal plasterboard 13mm
- Option of internal cladding 20mm
- Outer cladding is stained with ultra

Metal Profiled Roof tiles

Heavy duty industry standard profiled steel sheet roof tiles are also available to withstand harsh weather conditions. Rannila Monterrey is the best





New Forest Log Cabins Ltd

Sussex Element (Timber Frame) Transportable Mobile Home



We utilise modern technologies in the process of building our Konecta Homes, we guarantee that only the goods of perfect quality are brought out of the factory. Quality of a product is inspected in every phase of manufacturing such as:

- attention to detail and planning
- matching of fixings and components
- functioning of the windows doors
- quality of the building elements.

'THE ELEMENT SYSTEM PANEL HOUSE' is available in 6 standard model designs, which have all the great features of a log cabin, such as high insulation value, strength, and of course the undeniable aesthetic beauty of natural wood. We have created a new way to build them with an insulated panel system, which cuts construction time by over 70%.



We believe that you should have the freedom to choose that is unique to you and not be forced to accept mass produced standard models. With this in mind, we offer a complete design service and remain flexible enough to co-design with our clients, so if you have a particular layout in mind, we can provide you with a floor plan, 3D visual and a personal quotation free of charge.

If you would like to discuss your requirements in more detail, why not give us a call for more information, after all, it costs nothing to talk..!



New Forest Log Cabins Ltd
HORTON
Wimborne,
Dorset,
BH21 7JD

